

Engineering Data



WS/WD MODELS 036 - 360 WATER-TO-WATER HEAT PUMPS



Project Name: _____
 Engineer: _____
 Contractor: _____
 Architect: _____
 Date Received: _____
 Date Submitted: _____

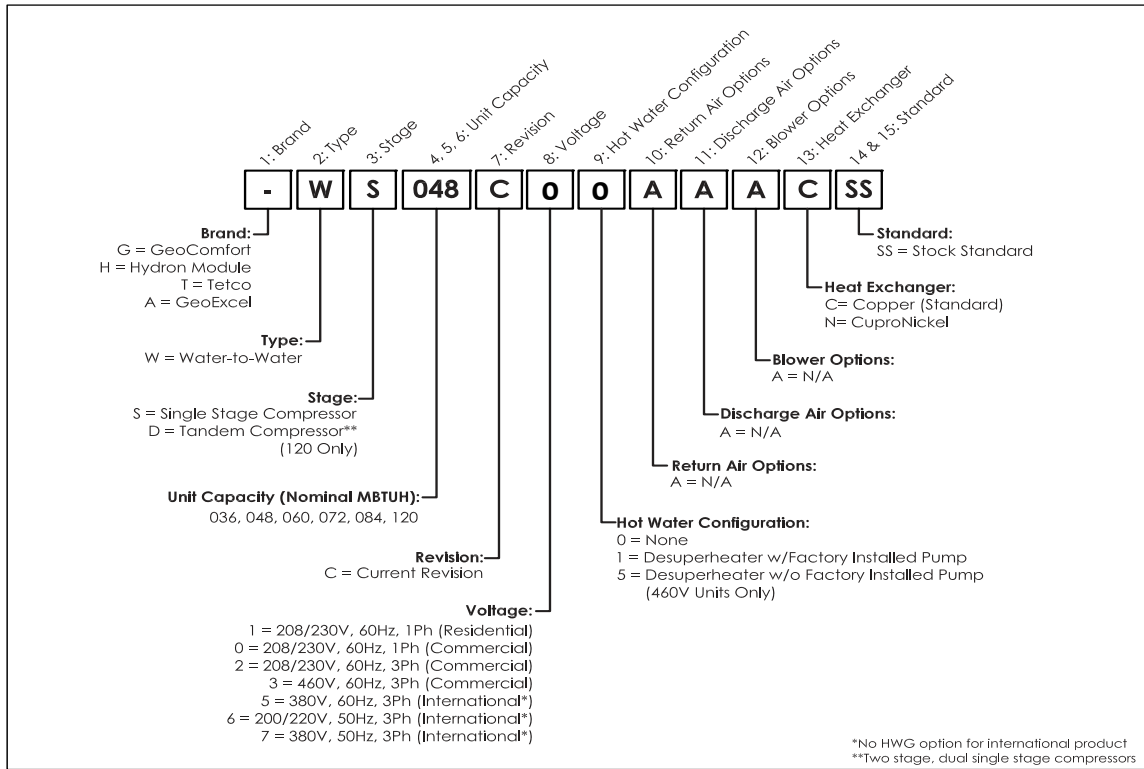
Unit Tag	Model Number
_____	_____
_____	_____
_____	_____
_____	_____
_____	_____
_____	_____
_____	_____
_____	_____
_____	_____
_____	_____
_____	_____
_____	_____
_____	_____
_____	_____
_____	_____
_____	_____
_____	_____
_____	_____
_____	_____
_____	_____
_____	_____



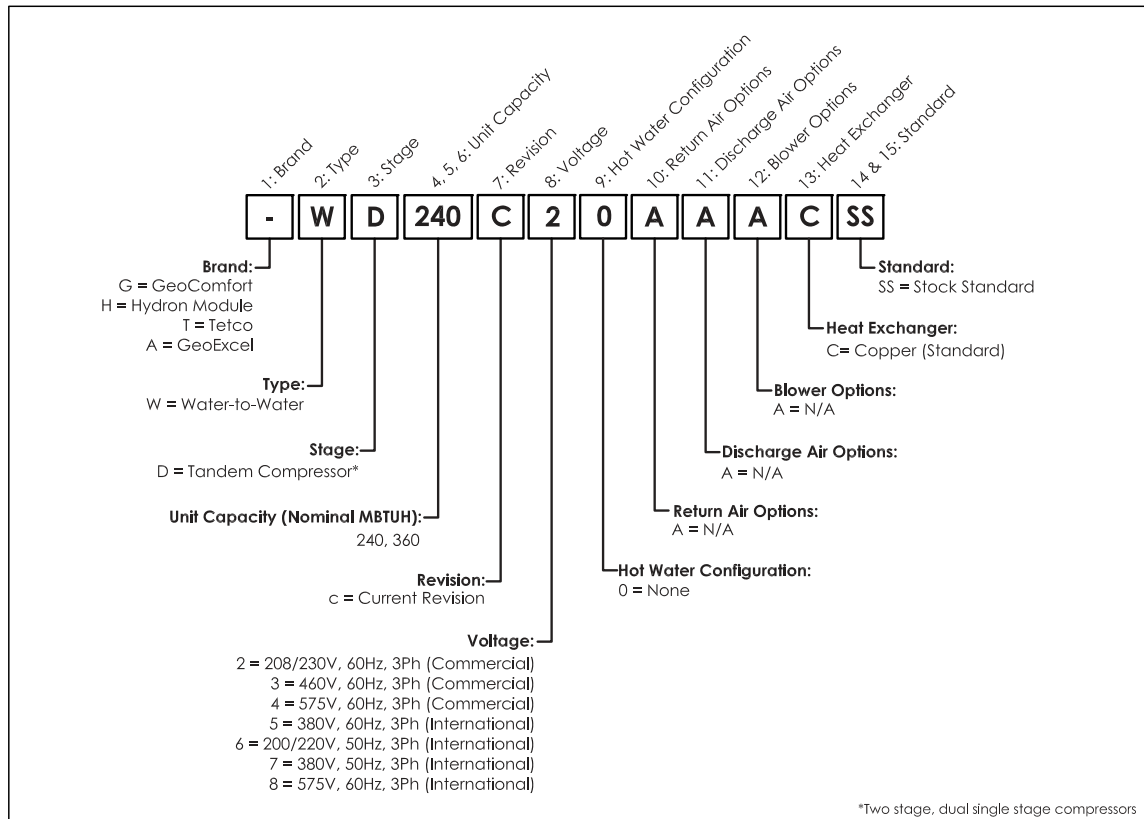
20D232-08NN
 Revision: A

MODEL NOMENCLATURE DECODERS:

Single Compressor Model Nomenclature Decoder:



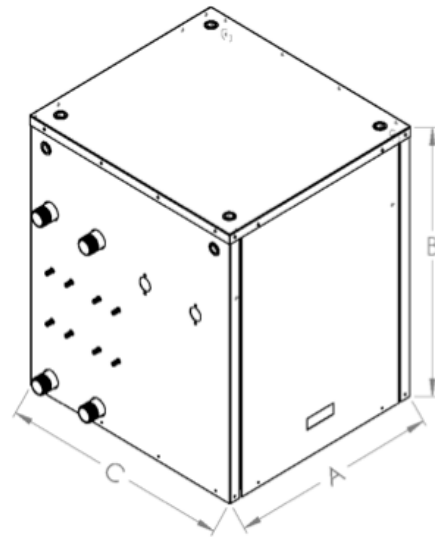
Dual Compressor Model Nomenclature Decoder:



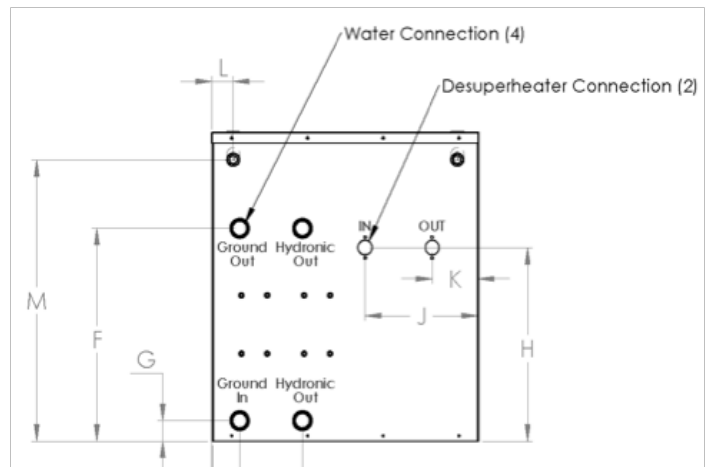
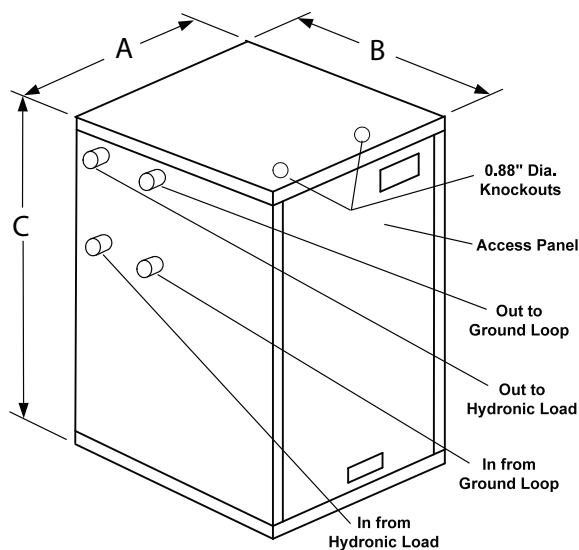
UNIT DIMENSIONAL DATA:

Dimension (all in inches)	036 - 084	120	240 - 360
A	23.4	27.0	30
B	29.2	27.5	51
C	25.8	26.1	36.7
D	6.1	-	-
E	3.2	-	-
F	18.1	-	-
G	2.8	-	-
H	18.3	-	-
J	6.5	-	-
K	4.4	-	-
L	2.0	-	-
M	26.5	-	-
N	20.8	-	-
P	25.1	-	-
Water Connections	036 - 084	120	240-360
Ground (copper)	1.25MPT	1.25MPT	2.0MPT
Ground (CuNi)	1.00 FPT	1.00 FPT	2.0MPT
Load	1.25MPT	1.25MPT	2.0MPT
HWG	1.00 FPT	1.00 FPT	N/A

Unit Dimensional Data, 36 - 084



Unit Dimensional Data, 120 - 360



PHYSICAL DATA

MODEL	036	048	060	072	084	120	240	360
COMPRESSOR TYPE	Single Stage Scroll							
Refrigerant Type	R 410-A							
Refrigerant Charge*	66	80	84	110	86	112	224	308
Heat Exchanger (Source)	Stainless Steel Braze Plate							
Source Option	Cupro-Nickel Tube in Shell						N/A	
Unit Weight (nominal) - lbs	210	260	300	286	415	465	800	1010

*Always refer to unit data plate during maintenance or repair

SINGLE COMPRESSOR UNIT ELECTRICAL DATA:

Model	Voltage Code/ HWG Option	60 Hz Power		Compressor		HWG Pump FLA	Ext. Loop Pump FLA	Total Unit FLA	Min Circuit AMPS	Max Fuse HACR	Min AWG	Max Ft
		Volts	Phase	LRA	RLA							
WS036	00	208/230	1	112.0	17.9	0.0	0.0	17.9	22.4	40	12	55
	01	208/230	1	112.0	17.9	0.3	0.0	18.2	22.7	40	12	54
	10	208/230	1	112.0	17.9	0.0	4.0	21.9	26.4	40	10	76
	11	208/230	1	112.0	17.9	0.3	4.0	22.2	26.7	45	10	75
	20	208/230	3	88.0	13.2	0.0	0.0	13.2	16.5	30	14	48
	21	208/230	3	88.0	13.2	0.3	0.0	13.5	16.8	30	14	47
	30/35	460	3	44.0	6.0	0.0	0.0	6.0	7.5	10	14	107
WS048	00	208/230	1	134.0	25.4	0.0	0.0	25.4	31.8	50	8	100
	01	208/230	1	134.0	25.4	0.3	0.0	25.7	32.1	50	8	99
	10	208/230	1	134.0	25.4	0.0	5.5	30.9	37.3	60	8	82
	11	208/230	1	134.0	25.4	0.3	5.5	31.2	37.6	60	8	82
	20	208/230	3	110.0	15.9	0.0	0.0	15.9	19.9	35	14	40
	21	208/230	3	110.0	15.9	0.3	0.0	16.2	20.2	35	12	61
	30/35	460	3	52.0	7.1	0.0	0.0	7.1	8.9	15	14	90
WS060	00	208/230	1	178.0	28.3	0.0	0.0	28.3	35.4	60	8	90
	01	208/230	1	178.0	28.3	0.3	0.0	28.6	35.7	60	8	89
	10	208/230	1	178.0	28.3	0.0	5.5	33.8	40.9	60	6	120
	11	208/230	1	178.0	28.3	0.3	5.5	34.1	41.2	60	6	119
	20	208/230	3	136.0	19.2	0.0	0.0	19.2	24.0	40	12	52
	21	208/230	3	136.0	19.2	0.3	0.0	19.5	24.3	40	12	51
	30/35	460	3	66.1	8.7	0.0	0.0	8.7	10.9	20	14	74
WS072	00	208/230	1	148.0	32.1	0.0	0.0	32.1	40.1	70	6	127
	01	208/230	1	148.0	32.1	0.3	0.0	32.4	40.4	70	6	125
	10	208/230	1	148.0	32.1	0.0	5.5	37.6	45.6	70	6	108
	11	208/230	1	148.0	32.1	0.3	5.5	37.9	45.9	70	6	107
	20	208/230	3	164.0	23.2	0.0	0.0	23.2	29.0	50	10	71
	21	208/230	3	164.0	23.2	0.3	0.0	23.5	29.3	50	10	70
	30/35	460	3	75.0	11.2	0.0	0.0	11.2	14.0	25	14	57
WS084	00	208/230	1	185.0	32.1	0.0	0.0	32.1	40.1	70	6	127
	01	208/230	1	185.0	32.1	0.3	0.0	32.4	40.4	70	6	125
	10	208/230	1	185.0	32.1	0.0	5.5	37.6	45.6	70	6	108
	11	208/230	1	185.0	32.1	0.3	5.5	37.9	45.9	70	6	107
	20	208/230	3	164.0	25.0	0.0	0.0	25.0	31.3	50	8	102
	21	208/230	3	164.0	25.0	0.3	0.0	25.3	31.6	50	8	101
	30/35	460	3	100.0	12.2	0.0	0.0	12.2	15.3	25	14	52

Notes:

1. All line and low voltage wiring must adhere to the National Electrical Code and Local Codes, whichever is the most stringent.
 2. Wire length based on a one way measurement with a 2% voltage drop.
 3. Wire size based on 60°C copper conductor and minimum circuit ampacity.
 4. All fuses class RK-5
- * The external loop pump FLA is based on a maximum of three UP26-116F-230V pumps (1/2hp) for 048 - 060 and two pumps for 034

DUAL COMPRESSOR UNIT ELECTRICAL DATA:

WD120	00	208/230	1	158.0 ea.	30.1 ea.	0.0	0.0	60.2	67.7	90	4	107
	01	208/230	1	158.0 ea.	30.1 ea.	0.3	0.0	60.5	68.0	90	4	106
	10	208/230	1	158.0 ea.	30.1 ea.	0.0	5.5	65.7	73.2	100	3	126
	11	208/230	1	158.0 ea.	30.1 ea.	0.3	5.5	66.0	73.5	100	3	126
	20	208/230	3	155.0 ea.	20.5 ea.	0.0	0.0	41.0	46.1	60	6	99
	21	208/230	3	155.0 ea.	20.5 ea.	0.3	0.0	41.3	46.4	60	6	98
	30/35	460	3	75.0 ea.	9.6 ea.	0.0	0.0	19.2	21.6	30	12	52
WD240	2	208/230	3	239.0 ea.	33.3 ea.	0.0	0.0	66.6	74.9	100	3	125
	3	460	3	125.0 ea.	17.9 ea.	0.0	0.0	35.8	40.3	50	6	114
	4	575	3	80.0 ea.	12.8 ea.	0.0	0.0	25.6	28.8	40	10	65
	5	380	3	145.0 ea.	23.7 ea.	0.0	0.0	47.4	53.3	70	6	86
	6	200/220	3	239.0 ea.	34.6 ea.	0.0	0.0	69.2	77.9	110	3	120
	7	380	3	118.0 ea.	17.9 ea.	0.0	0.0	35.8	40.3	50	6	114
	8	575	3	80.0ea.	12.8 ea.	0.0	0.0	25.6	28.8	40	10	65
WD360	2	208/230	3	340.0 ea.	55.8 ea.	0.0	0.0	111.6	125.6	175	2/0	199
	3	460	3	173.0 ea.	26.9 ea.	0.0	0.0	53.8	60.5	80	4	119
	4	575	3	132.0 ea.	23.7 ea.	0.0	0.0	47.4	53.3	70	6	86
	5	380	3	196.0 ea.	34.0 ea.	0.0	0.0	68.0	76.5	110	3	122
	6	200/220	3	325.0 ea.	50.6 ea.	0.0	0.0	101.2	113.9	150	1/0	164
	7	380	3	173.0 ea.	25.0 ea.	0.0	0.0	50.0	56.3	80	4	129
	8	575	3	132.0 ea.	23.7 ea.	0.0	0.0	47.4	53.3	70	6	86

Notes:

1. All line and low voltage wiring must adhere to the National Electrical Code and Local Codes, whichever is the most stringent.
2. Wire length based on a one way measurement with a 2% voltage drop.
3. Wire size based on 60°C copper conductor and minimum circuit ampacity.
4. All fuses class RK-5

* Data for reference only. Single-Phase model no longer available.



www.enertechgeo.com

Greenville, IL - Mitchell, SD
www.enertechgeo.com
info@enertechgeo.com



Conforms to
UL Std 1995
Certified to
CAN/CSA Std
C22.2 No. 236

